

**DG**  
**WEST**



**Reportage.**  
Africa

## About Reportage Group

Reportage Group is one of the largest private developers in the United Arab Emirates, with projects across the UAE, Kenya, Uganda, Rwanda, Nigeria, Egypt, Turkey, Morocco, Saudi Arabia, Azerbaijan, Pakistan, and other international markets.

Since 2014, we have been building legacies in the UAE and beyond, committed to shaping communities that combine innovation with accessibility. Our focus is clear: to create homes that deliver strong value for investors while providing residents with comfort, quality, and a true sense of belonging.

**OWN YOUR STORY**



A panoramic view of the Nairobi skyline at dusk. The sky transitions from a deep blue at the top to a warm orange and red near the horizon. Several skyscrapers are illuminated, including a prominent cylindrical tower with a flat top and a modern building with a distinctive angular facade. The foreground shows silhouettes of trees and streetlights.

Welcome to

# Nairobi, Kenya

## The Pulse of East Africa

Nairobi is a city on the move. It is where enterprise meets culture, and where Africa's future takes shape. A hub of business, technology, and lifestyle, it has become a global magnet for opportunity.

At the heart of this transformation lies **Westlands** a district where growth, lifestyle, and international connection converge. It is the center of Nairobi's cosmopolitan energy.



# The Crown of Westlands

On Sports Road, in the beating heart of Westlands, **DG West** emerges as a bold new landmark.

A mixed-use tower of **Residential and Hotel Apartments**, it blends the pace of city life with the comfort of refined living.

DG West is not just a home; it is a statement of ambition, designed for those who want to live where the city's pulse beats the strongest.





# Nairobi Living, Elevated

---

The story of Nairobi is being written in its skyline, a canvas of ambition, culture, and progress. Nowhere is this transformation more alive than in Westlands, the city's beating heart of commerce, lifestyle, and global connection.

Amidst this surge of growth, one address is poised to stand above the rest. On the prestigious Sports Road, a new icon begins to rise: DG West Residential & Hotel Apartments.

This is not merely architecture; it is a symbol. A destination where design meets distinction, where everyday living is elevated into an experience, and where investment is not just preserved, but multiplied.

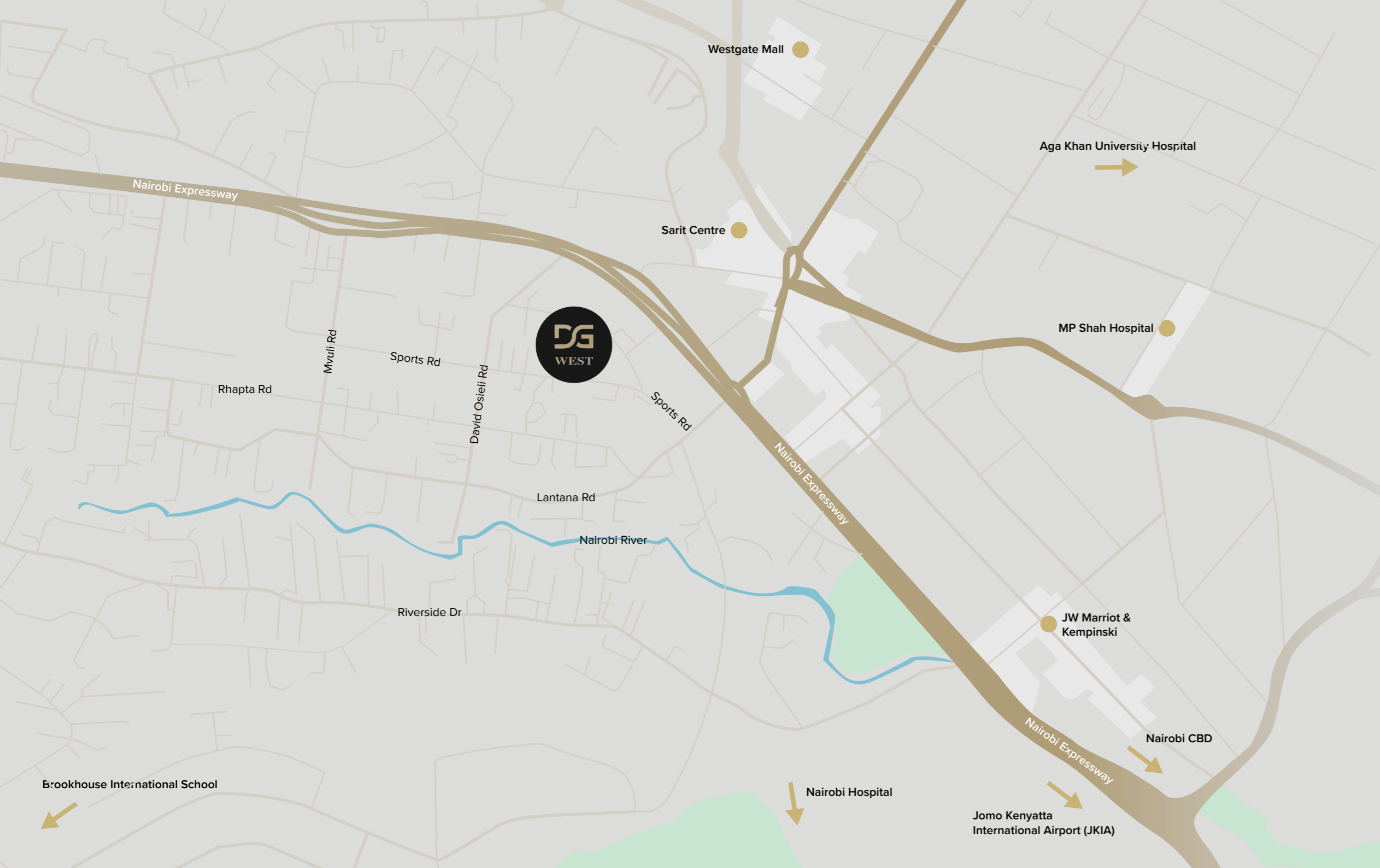
DG West is the rare convergence of luxury, location, and lifestyle, a landmark that redefines what it means to live, prosper, and belong in Nairobi's most sought-after district.

## World-Class Amenities

- Rooftop infinity pool with skyline views
- Modern fitness center & yoga garden
- Residents' lounge and private dining spaces
- Kids' daycare & play area
- 24-hour concierge and reception
- Business and conference facilities
- Valet parking & podium levels
- Retail and convenience outlets within the tower
- Dedicated pet-friendly facilities



A Skyline That Matches  
Your Ambition



# Location Features

Surrounded by embassies and international organizations  
Close to global schools and universities

- 05** Minutes to Sarit Centre
- 08** Minutes to Westgate Mall
- 08** Minutes to JW Marriot & Kempinski
- 09** Minutes to MP Shah Hospital
- 10** Minutes to Nairobi CBD
- 13** Minutes to Nairobi Hospital
- 15** Minutes to Aga Khan University Hospital
- 19** Minutes to the UN
- 20** Minutes to Jomo Kenyatta International Airport (JKIA)
- 23** Minutes to Wilson Airport
- 28** Minutes to Brookhouse International School





Where Business  
Meets Lifestyle



Nairobi's Urban Life,  
Refined

# Project Details

Type	High-rise Residential & Hotel Apartments
Levels	25 Floors
Location	Sports Road, Westlands, Nairobi
Developer	Reportage Group
Unit Mix	Studios, 1BR, 2BR
Total Units	200 Units
Status	Pre-launch / Under Construction / Sales Open



From Sunrise to  
City Lights



Designed for  
**the City Achiever**

---



Comfort in the  
**Middle of Progress**

---





## Unit Mix

**Studios – 80 units**

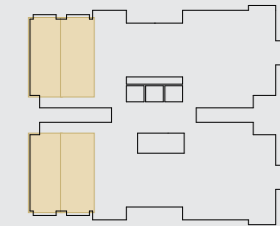
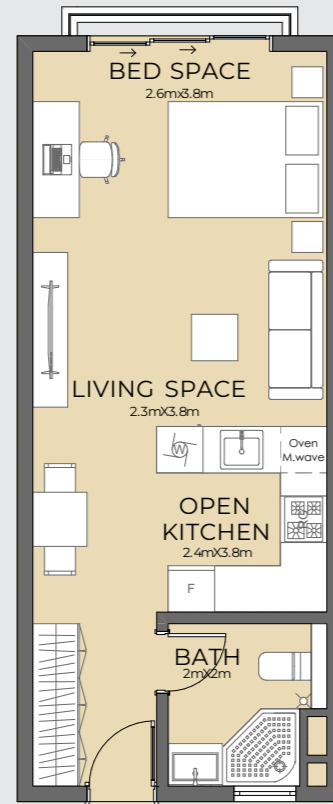
**1 Bedroom Apartments – 80 units**

**2 Bedroom Apartments – 40 units**

**Total: 200 units**

# Studio

5<sup>TH</sup> - 24<sup>TH</sup> Floor Plan

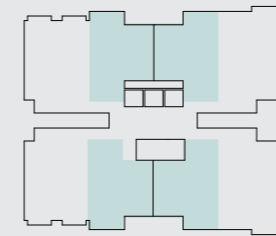
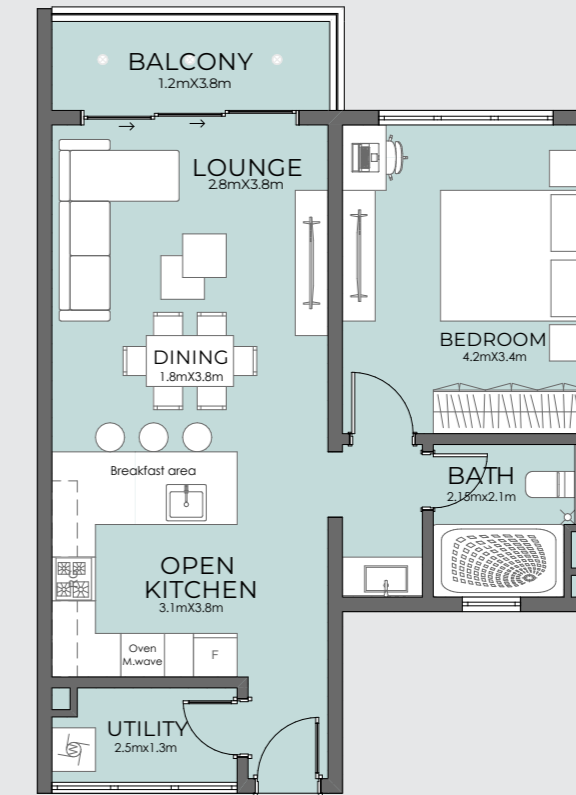


Internal Area	<b>41 SQM</b>
External Area	-
<b>Total Area</b>	<b>41 SQM</b>

All drawings and dimensions are approximate. Drawings are not to scale and are subject to change without notice. The developer reserves the right to make revisions. The units are measured at typical floors in the building and columns may vary in size depending on the floor level. The furnishing and accessories shown are for representation only. The availability, length and width of the balcony varies depending on which floor and which orientation the unit is located within the building. There will be slight differences in the internal areas between the same unit types depending on the shaft sizes that go through the units

# One Bedroom

5<sup>TH</sup> - 24<sup>TH</sup> Floor Plan

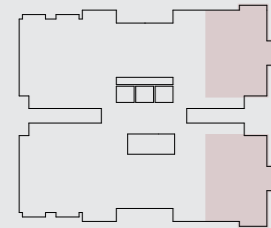
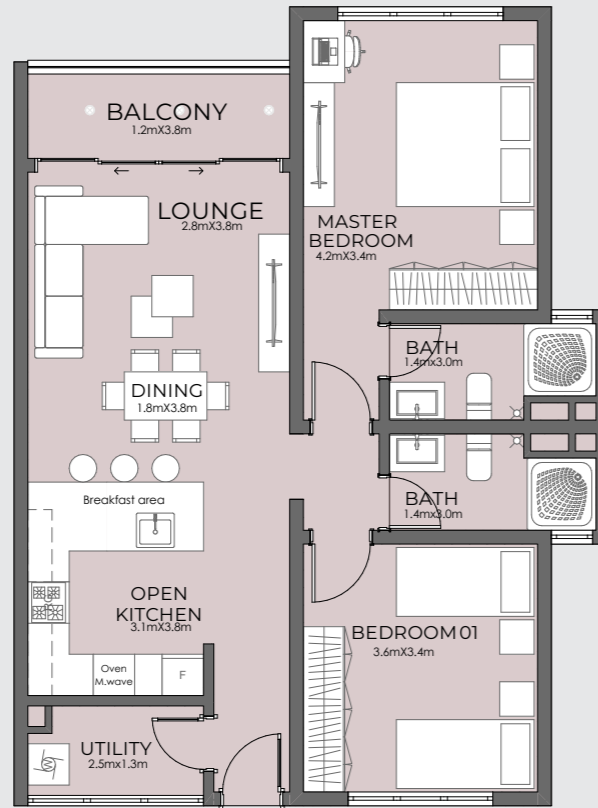


Internal Area	<b>65 SQM</b>
External Area	<b>5 SQM</b>
<b>Total Area</b>	<b>70 SQM</b>

All drawings and dimensions are approximate. Drawings are not to scale and are subject to change without notice. The developer reserves the right to make revisions. The units are measured at typical floors in the building and columns may vary in size depending on the floor level. The furnishing and accessories shown are for representation only. The availability, length and width of the balcony varies depending on which floor and which orientation the unit is located within the building. There will be slight differences in the internal areas between the same unit types depending on the shaft sizes that go through the units

# Two Bedroom

5<sup>TH</sup> - 24<sup>TH</sup> Floor Plan



Internal Area	85 SQM
External Area	5 SQM
<b>Total Area</b>	<b>90 SQM</b>

All drawings and dimensions are approximate. Drawings are not to scale and are subject to change without notice. The developer reserves the right to make revisions. The units are measured at typical floors in the building and columns may vary in size depending on the floor level. The furnishing and accessories shown are for representation only. The availability, length and width of the balcony varies depending on which floor and which orientation the unit is located within the building. There will be slight differences in the internal areas between the same unit types depending on the shaft sizes that go through the units

DG  
WEST

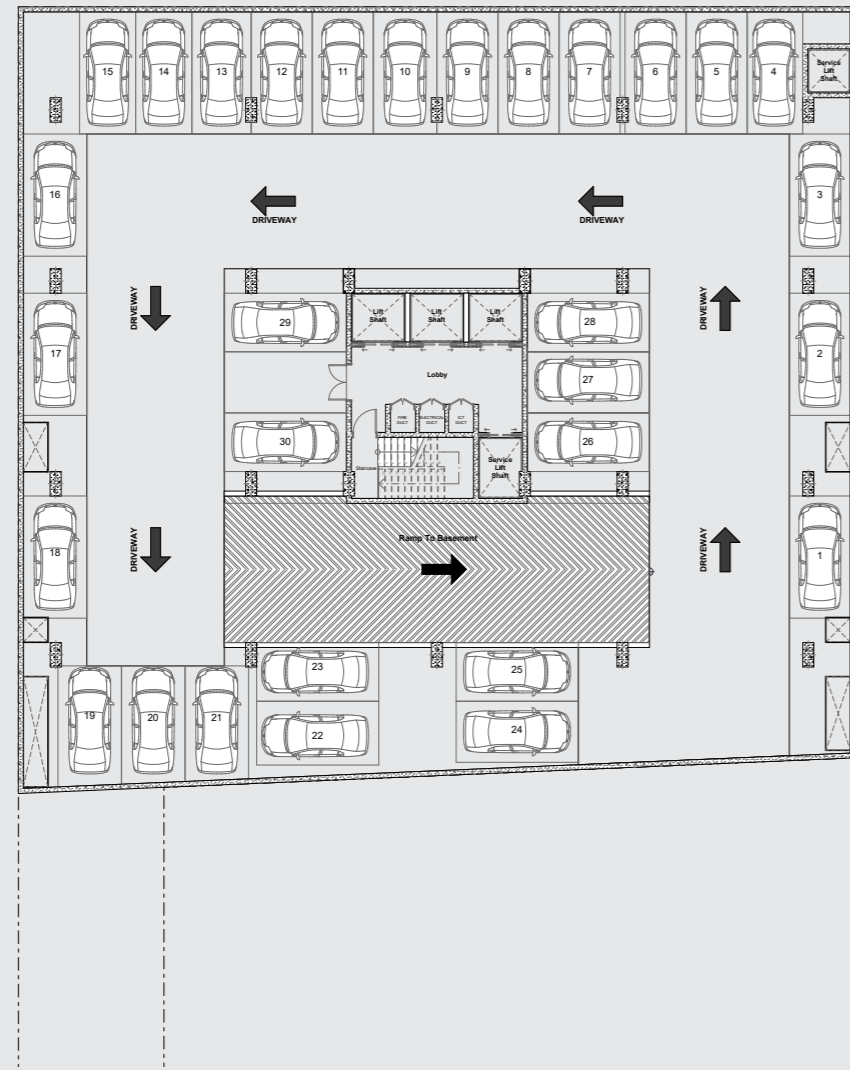
# Floor Plan

---

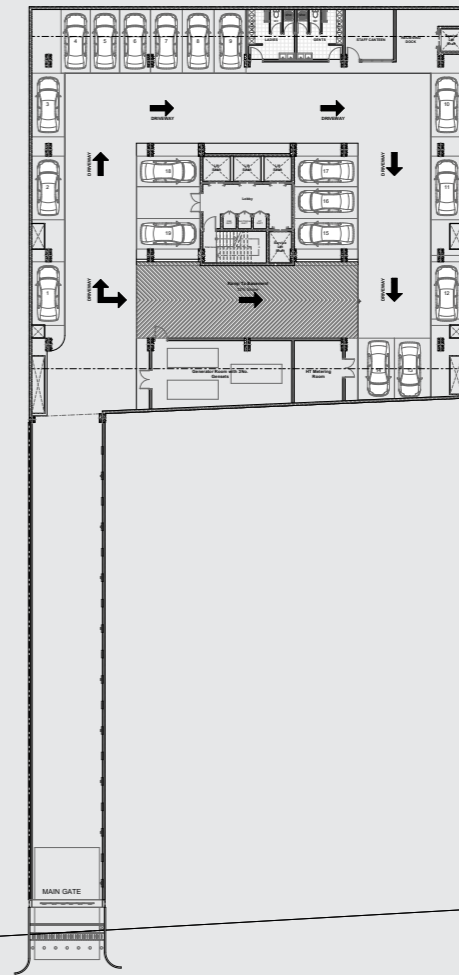


# Basement Floor Plan

1<sup>st</sup>, 2<sup>nd</sup>, 3<sup>rd</sup> Floor



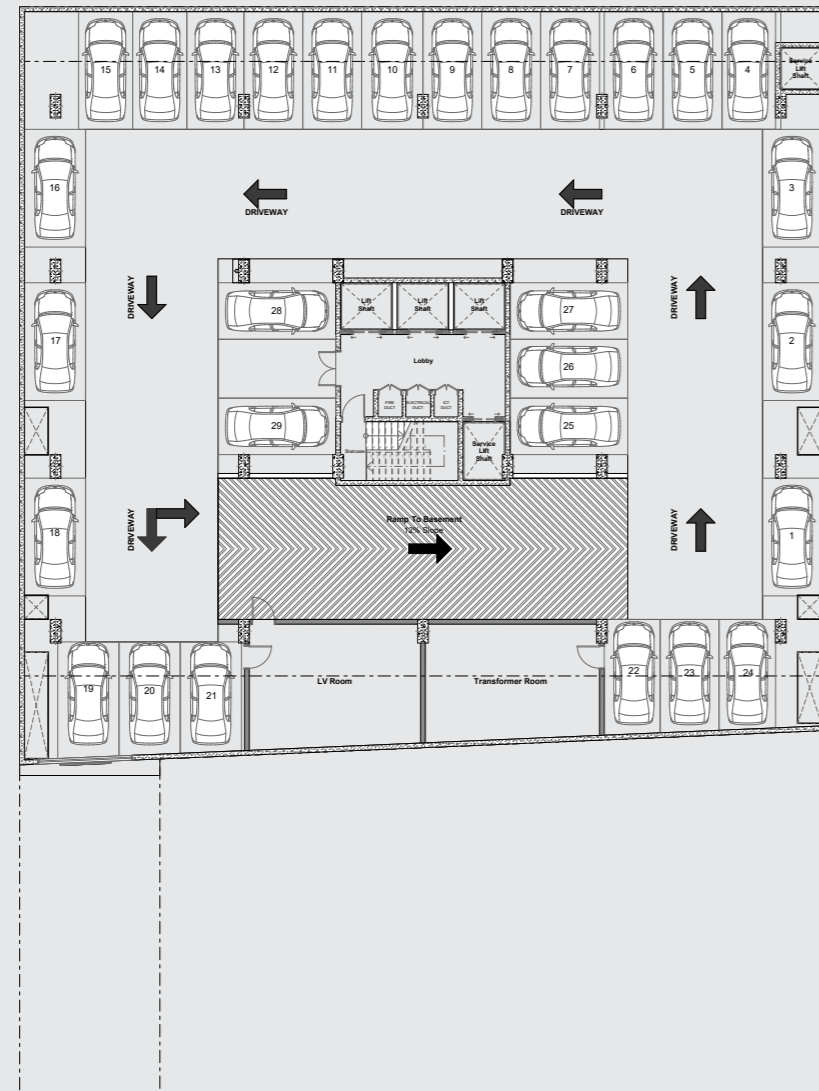
# Ground Floor Plan



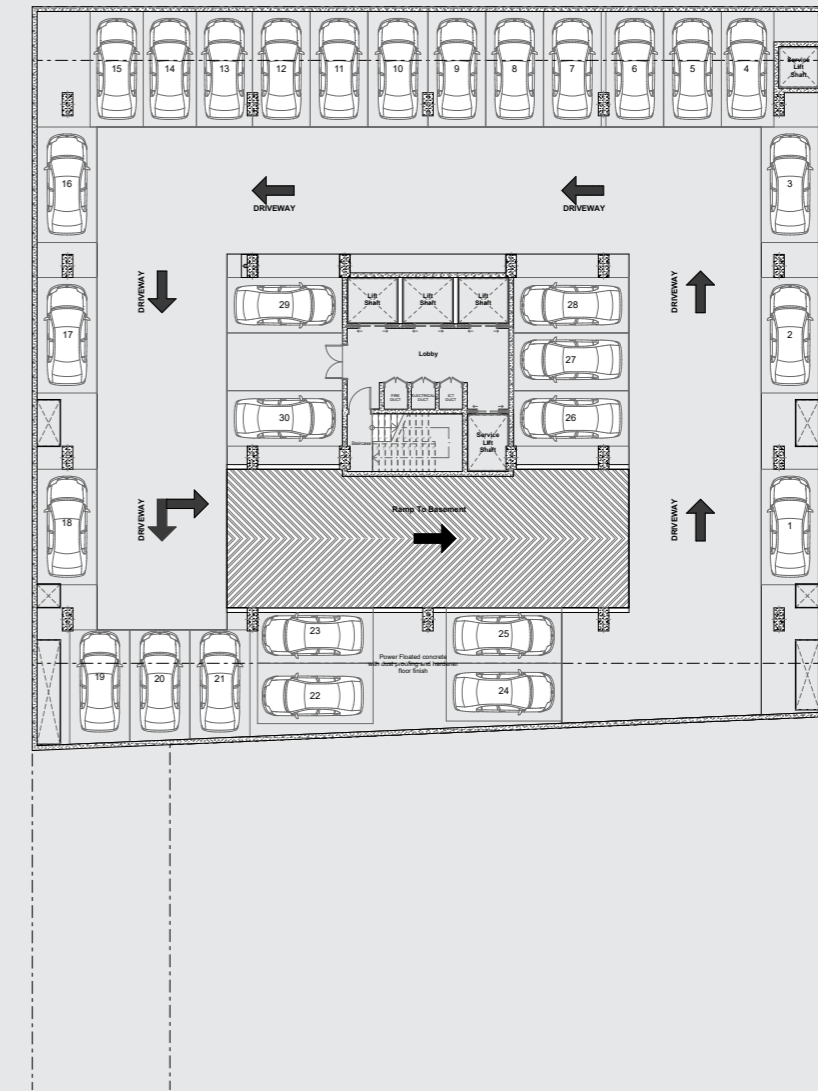
All drawings and dimensions are approximate. Drawings are not to scale and are subject to change without notice. The developer reserves the right to make revisions. The units are measured at typical floors in the building and columns may vary in size depending on the floor level. The furnishing and accessories shown are for representation only. The availability, length and width of the balcony varies depending on which floor and which orientation the unit is located within the building. There will be slight differences in the internal areas between the same unit types depending on the shaft sizes that go through the units

All drawings and dimensions are approximate. Drawings are not to scale and are subject to change without notice. The developer reserves the right to make revisions. The units are measured at typical floors in the building and columns may vary in size depending on the floor level. The furnishing and accessories shown are for representation only. The availability, length and width of the balcony varies depending on which floor and which orientation the unit is located within the building. There will be slight differences in the internal areas between the same unit types depending on the shaft sizes that go through the units

# 1st Floor Plan



# 2nd Floor Plan



All drawings and dimensions are approximate. Drawings are not to scale and are subject to change without notice. The developer reserves the right to make revisions. The units are measured at typical floors in the building and columns may vary in size depending on the floor level. The furnishing and accessories shown are for representation only. The availability, length and width of the balcony varies depending on which floor and which orientation the unit is located within the building. There will be slight differences in the internal areas between the same unit types depending on the shaft sizes that go through the units

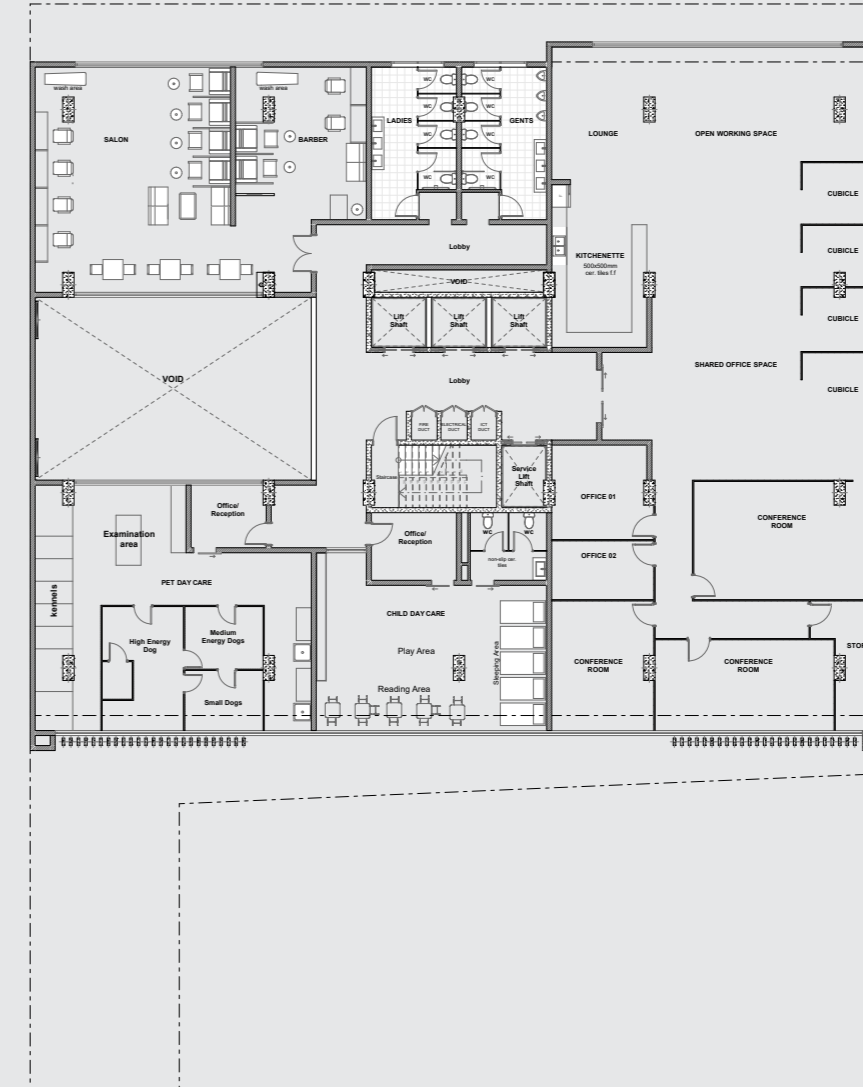
All drawings and dimensions are approximate. Drawings are not to scale and are subject to change without notice. The developer reserves the right to make revisions. The units are measured at typical floors in the building and columns may vary in size depending on the floor level. The furnishing and accessories shown are for representation only. The availability, length and width of the balcony varies depending on which floor and which orientation the unit is located within the building. There will be slight differences in the internal areas between the same unit types depending on the shaft sizes that go through the units

# 3<sup>rd</sup> Floor Plan



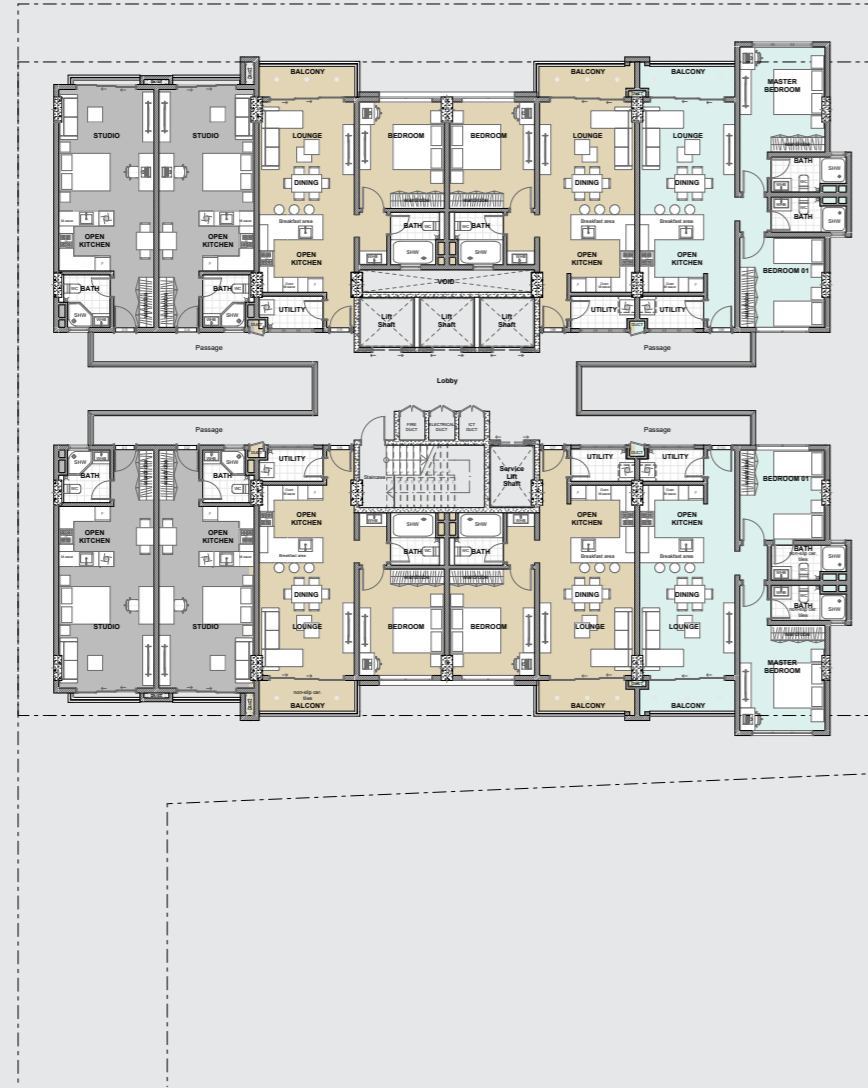
All drawings and dimensions are approximate. Drawings are not to scale and are subject to change without notice. The developer reserves the right to make revisions. The units are measured at typical floors in the building and columns may vary in size depending on the floor level. The furnishing and accessories shown are for representation only. The availability, length and width of the balcony varies depending on which floor and which orientation the unit is located within the building. There will be slight differences in the internal areas between the same unit types depending on the shaft sizes that go through the units

# 4<sup>th</sup> Floor Plan



All drawings and dimensions are approximate. Drawings are not to scale and are subject to change without notice. The developer reserves the right to make revisions. The units are measured at typical floors in the building and columns may vary in size depending on the floor level. The furnishing and accessories shown are for representation only. The availability, length and width of the balcony varies depending on which floor and which orientation the unit is located within the building. There will be slight differences in the internal areas between the same unit types depending on the shaft sizes that go through the units

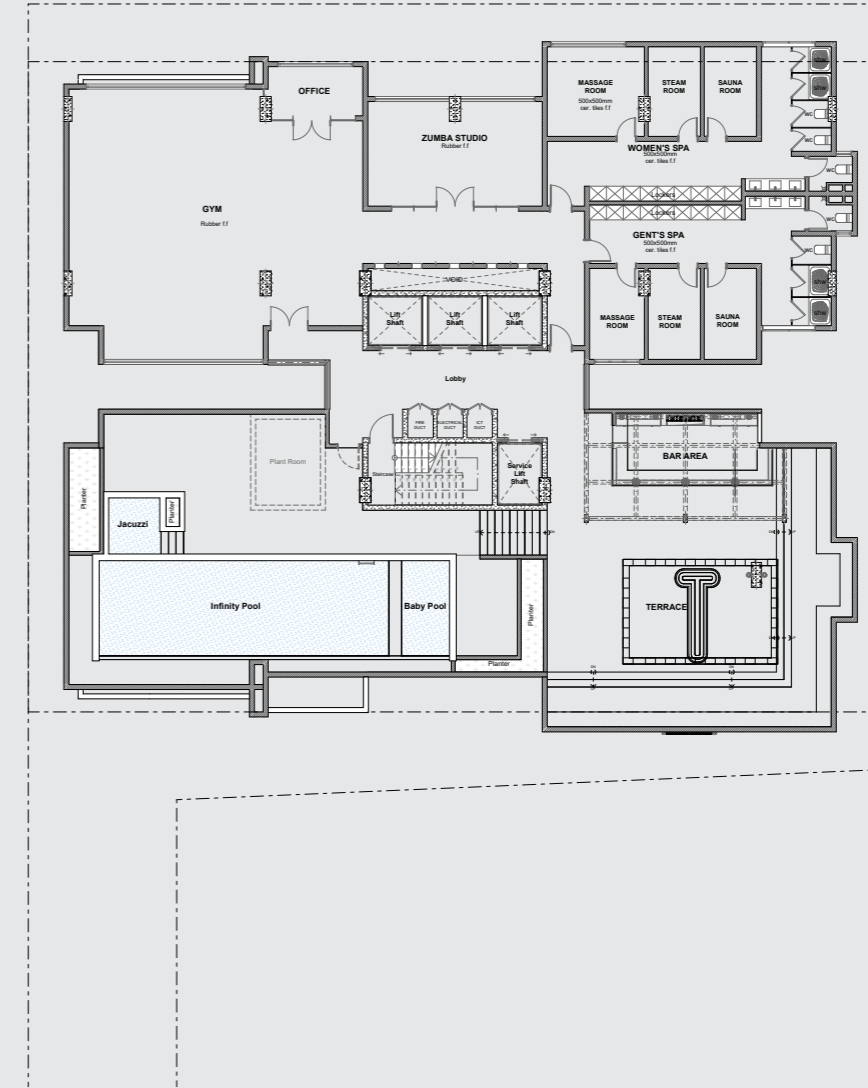
# 5<sup>th</sup> - 24<sup>th</sup> Floor Plan



- STUDIO
- 1B
- 2B

All drawings and dimensions are approximate. Drawings are not to scale and are subject to change without notice. The developer reserves the right to make revisions. The units are measured at typical floors in the building and columns may vary in size depending on the floor level. The furnishing and accessories shown are for representation only. The availability, length and width of the balcony varies depending on which floor and which orientation the unit is located within the building. There will be slight differences in the internal areas between the same unit types depending on the shaft sizes that go through the units

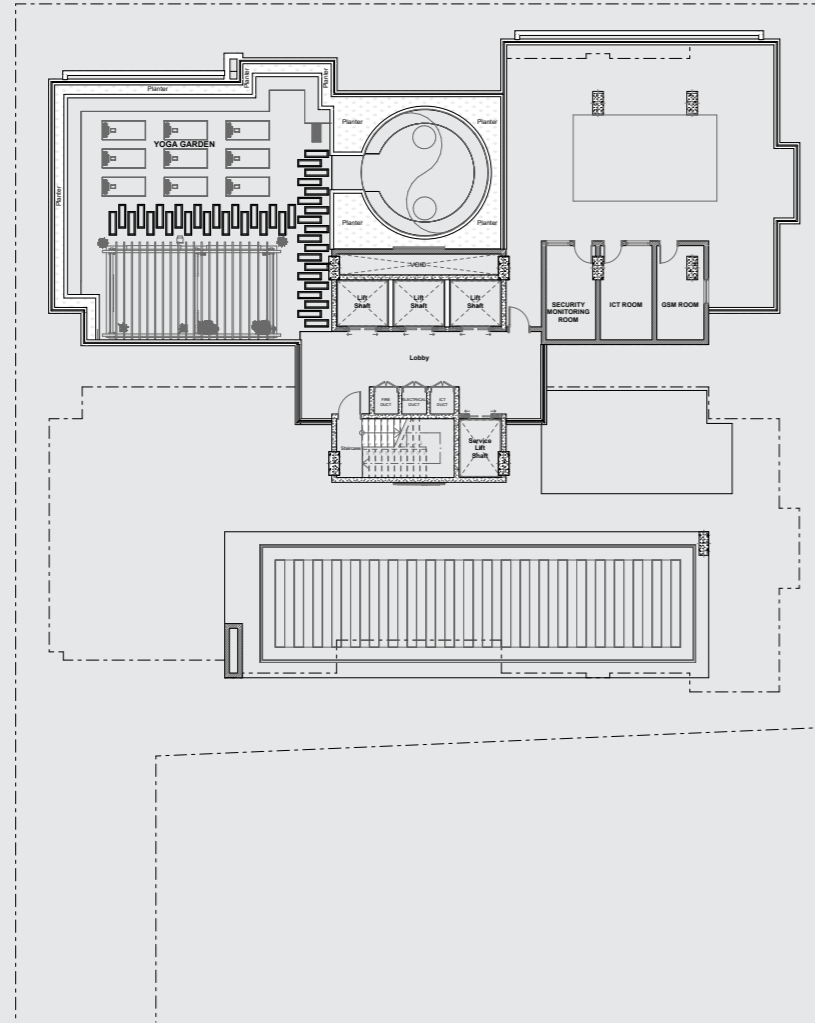
# 25<sup>th</sup> Floor Plan



All drawings and dimensions are approximate. Drawings are not to scale and are subject to change without notice. The developer reserves the right to make revisions. The units are measured at typical floors in the building and columns may vary in size depending on the floor level. The furnishing and accessories shown are for representation only. The availability, length and width of the balcony varies depending on which floor and which orientation the unit is located within the building. There will be slight differences in the internal areas between the same unit types depending on the shaft sizes that go through the units

# 26<sup>th</sup> Floor Plan

---



All drawings and dimensions are approximate. Drawings are not to scale and are subject to change without notice. The developer reserves the right to make revisions. The units are measured at typical floors in the building and columns may vary in size depending on the floor level. The furnishing and accessories shown are for representation only. The availability, length and width of the balcony varies depending on which floor and which orientation the unit is located within the building. There will be slight differences in the internal areas between the same unit types depending on the shaft sizes that go through the units



**Reportage.**  
Africa

