



ATREUS
BROOKSIDE

LUXURY APARTMENT

ATREUS BROOKSIDE

Brookside Grove, Westlands





LUXURY APARTMENT
ATREUS BROOKSIDE

AMENITIES



Sauna Room



Rooftop Pool



Fully-equipped Gym



Relaxation Area



Kids Play Area



Sky Garden



Ample Parking



Intercom



CCTV Surveillance



Back-up Generator

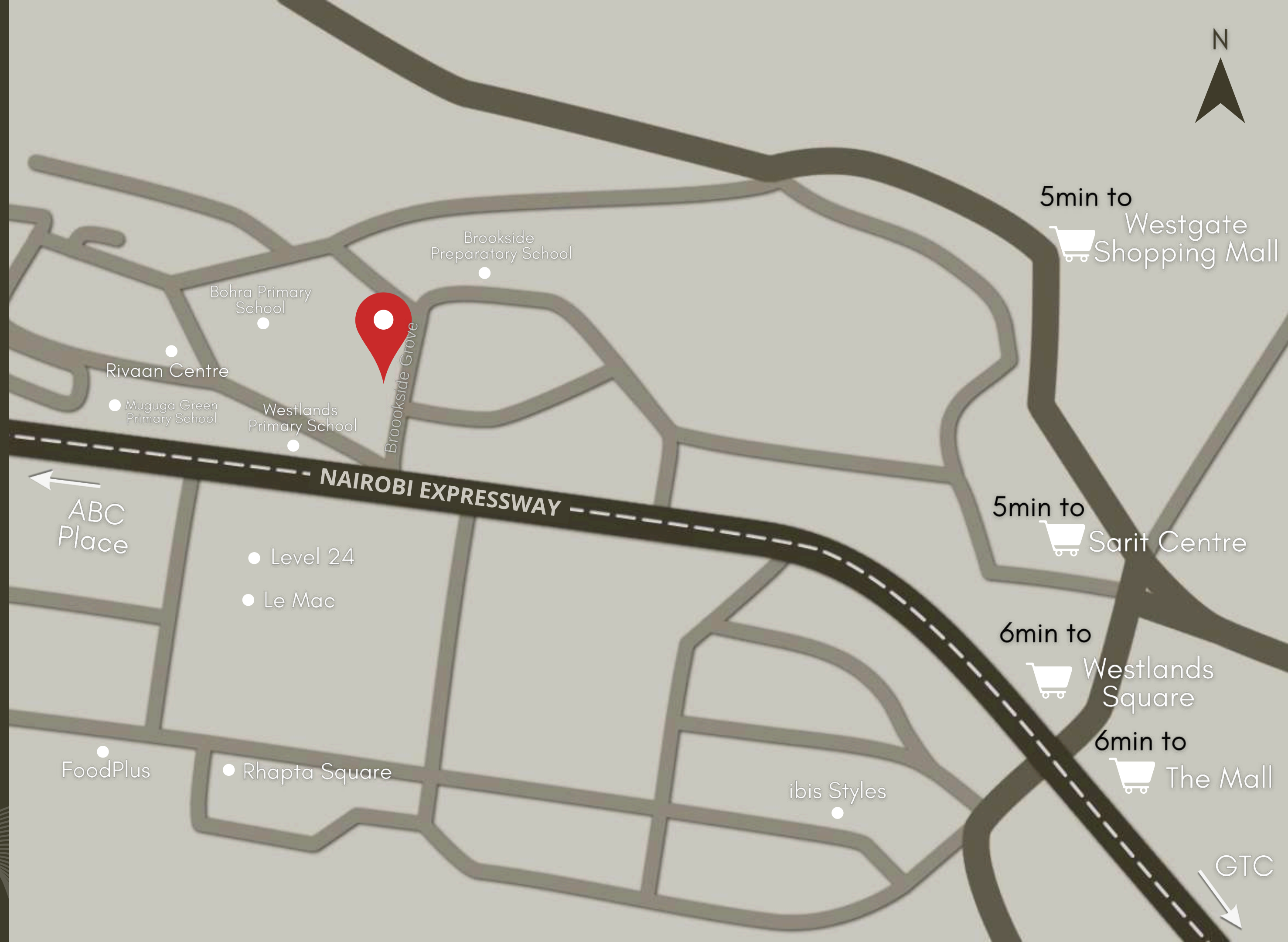


Borehole Water



24/7 Security

Location
is always
key...



UNIT TYPE

• 1 BEDROOM

• 2 BEDROOM

• 3 BEDROOM



1 BEDROOM

Price From:

8,500,000 KES

Gross Size: 65 SQM (700 SQFT)

- Master Bedroom with Relaxation Corner
- Spacious Balcony
- Laundry Room
- Open-Plan Kitchen

1 BEDROOM

Laundry Room

Bathroom

Master Bedroom

Relaxation
Corner

Open Kitchen

Cosy Living Room

Spacious
Balcony



1 BEDROOM+STUDY

Price From:

9,500,000 KES

Gross Size: 73 SQM (786 SQFT)



- Study Room with Adaptability
- Spacious Balcony
- Laundry Room
- Open-Plan Kitchen

1 BEDROOM + STUDY

Open Kitchen

Living Room

Spacious
Balcony

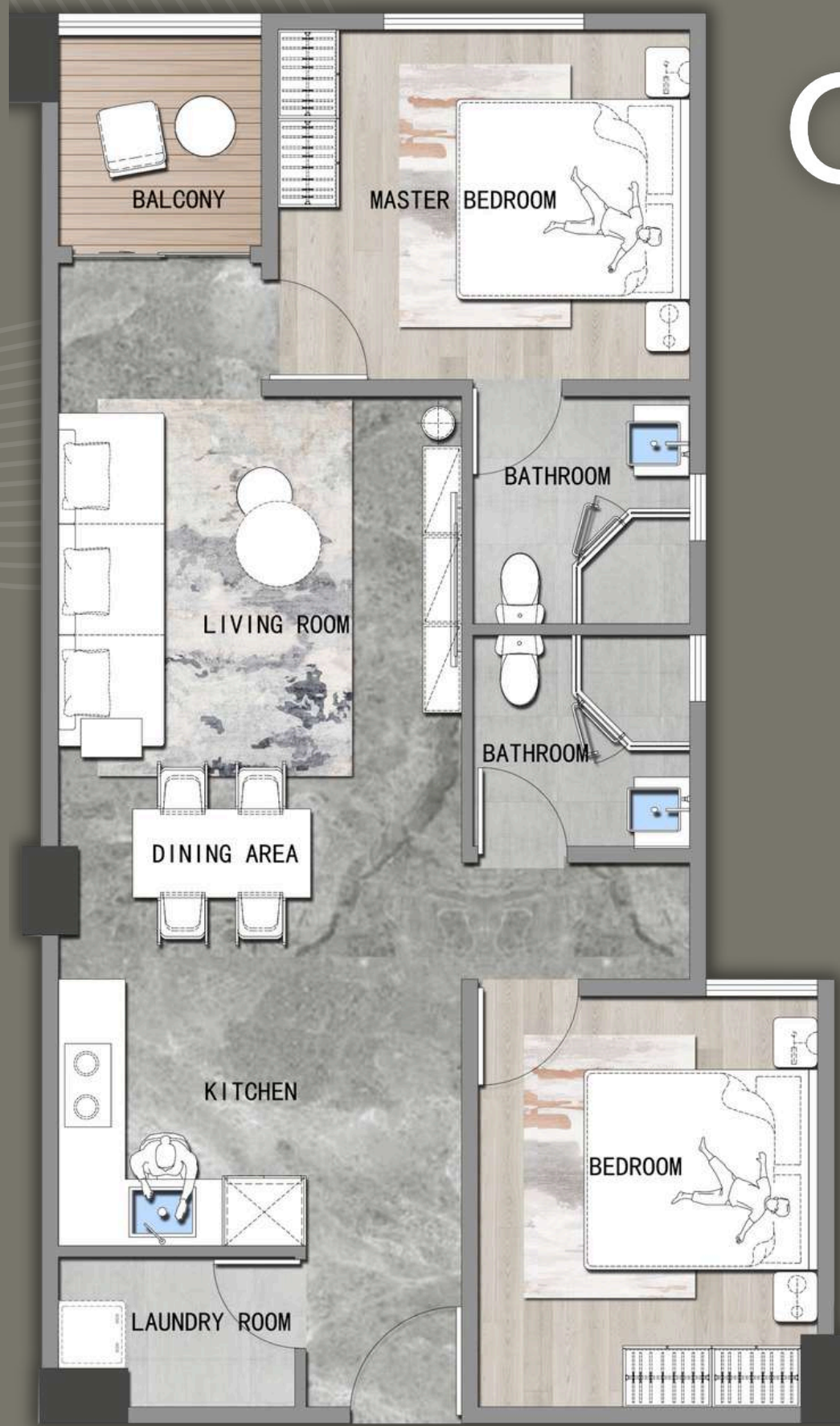
Study Room

Laundry Room

Bathroom

Master Bedroom





COMPACT 2 BEDROOM

Price From:

11,500,000 KES

Gross Size: 88 SQM (947 SQFT)

- En-suite Master Bedroom
- Laundry Room
- Balcony
- Open-Plan Kitchen

2 BEDROOM

Guest Bedroom

Bathroom

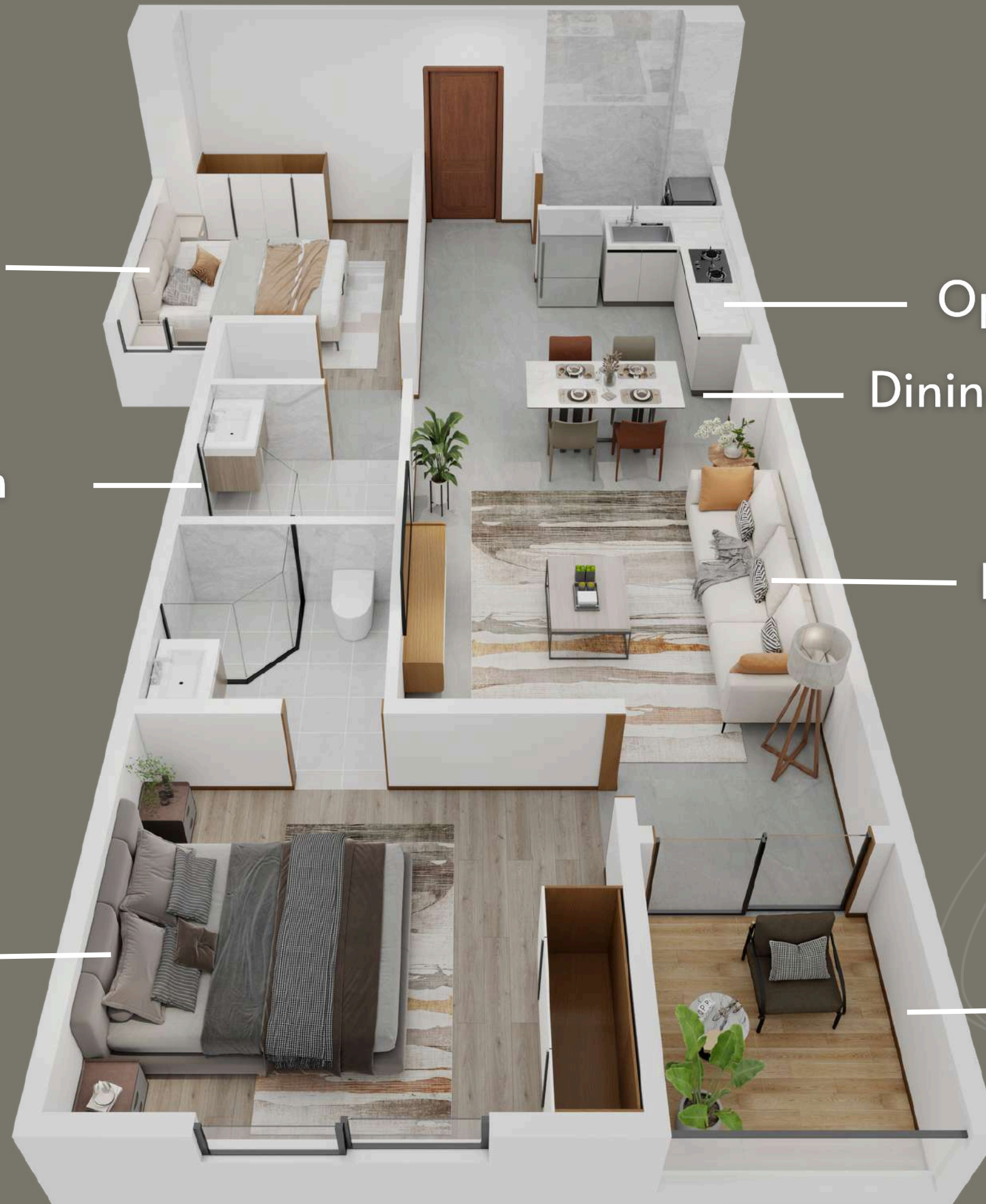
En-suite
Master Bedroom

Open-Plan Kitchen

Dining Area

Living Room

Square-Shaped
Balcony





2 BEDROOM

Price From:

13,000,000 KES

Gross Size: 101 SQM (1087 SQFT)

- Master Bedroom with Sunny Balcony
- Spacious Cantilevered Balcony
- Open-Plan Kitchen
- Laundry Room

2 BEDROOM

Guest Bedroom

Shared Bathroom

En-suite
Master Bedroom

Spacious
Cantilevered
Balcony

Laundry Room

Open Kitchen

Dining Area

Living Room





2 BEDROOM PLUS

Price From:

13,500,000 KES

Gross Size: 105 SQM (1130 SQFT)

- Luxury Three-Balcony Design
- En-suite Master Bedroom
- Laundry Room
- Open-Plan Kitchen

2 BEDROOM





2 BEDROOM+STUDY

Price From:

14,500,000 KES

Gross Size: 112 SQM (1206 SQFT)

- Master Bedroom with Sunny Balcony
- 1.85M-Wide-Balcony
- Laundry Room
- Open-Plan Kitchen
- Study Room with Adaptability

2 BEDROOM+STUDY

Study Room

Guest Bedroom

Bathroom

En-suite
Master Bedroom

Laundry Room

Open Kitchen

Dining Area

Living Room

Extra Large Balcony





2 BEDROOM+DSQ

Price From:

16,500,000 KES

Gross Size: 132 SQM (1421 SQFT)

- Master Bedroom with Sunny Balcony
- Guest Bedroom with Study Area
- Three-Balcony Design
- Open-Plan Kitchen
- DSQ Connected via Laundry Balcony

2 BEDROOM+DSQ





3 BEDROOM+DSQ

Price From:

22,500,000 KES

Gross Size: 169 SQM (1819 SQFT)

- 2.4M-Wide-Balcony
- Open-Plan Kitchen
- Laundry Balcony
- Detached DSQ with Bathroom

3 BEDROOM+DSQ



BROOKSIDE GROVE

FLOOR PLAN





Rooftop Oasis Lounge Gorgeous Relaxation Facilities

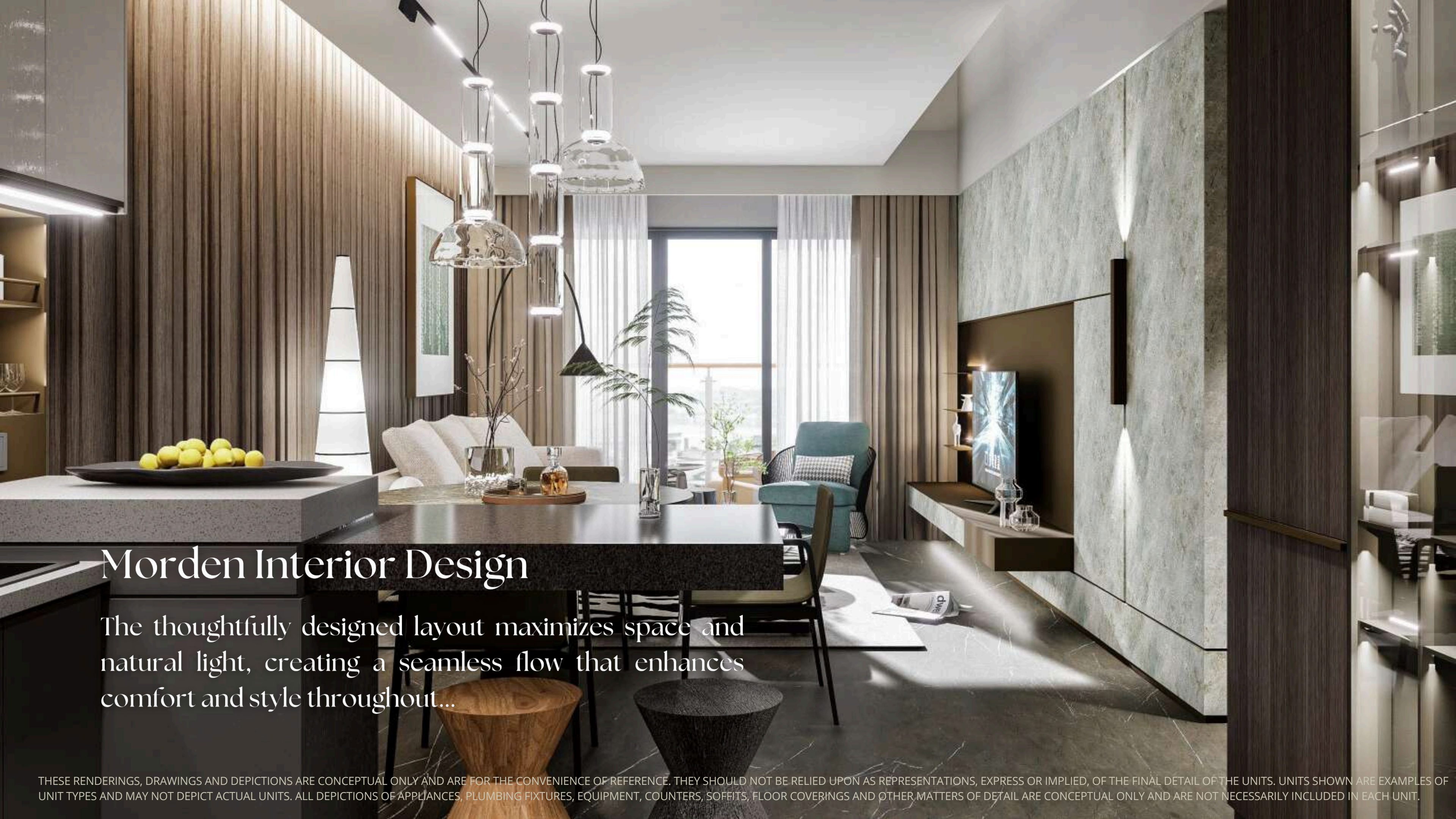
boasting a grand rooftop garden and an infinite swimming pool, offering a serene escape from the hustle and bustle of the city in your own compound



Tranquil and Convenient Living

Providing a convenient connection with all main shopping malls, while enjoying the quiet atmosphere for relaxation.

THESE RENDERINGS, DRAWINGS AND DEPICTIONS ARE CONCEPTUAL ONLY AND ARE FOR THE CONVENIENCE OF REFERENCE. THEY SHOULD NOT BE RELIED UPON AS REPRESENTATIONS, EXPRESS OR IMPLIED, OF THE FINAL DETAIL OF THE UNITS. UNITS SHOWN ARE EXAMPLES OF UNIT TYPES AND MAY NOT DEPICT ACTUAL UNITS. ALL DEPICTIONS OF APPLIANCES, PLUMBING FIXTURES, EQUIPMENT, COUNTERS, SOFFITS, FLOOR COVERINGS AND OTHER MATTERS OF DETAIL ARE CONCEPTUAL ONLY AND ARE NOT NECESSARILY INCLUDED IN EACH UNIT.



Morden Interior Design

The thoughtfully designed layout maximizes space and natural light, creating a seamless flow that enhances comfort and style throughout...

Experience refined comfort in our elegantly designed luxury lounge. With plush seating, warm lighting, and a sophisticated ambiance, it's the perfect space to relax, socialize, or unwind in style.

The Ultimate Luxury Lounge



THESE RENDERINGS, DRAWINGS AND DEPICTIONS ARE CONCEPTUAL ONLY AND ARE FOR THE CONVENIENCE OF REFERENCE. THEY SHOULD NOT BE RELIED UPON AS REPRESENTATIONS, EXPRESS OR IMPLIED, OF THE FINAL DETAIL OF THE UNITS. UNITS SHOWN ARE EXAMPLES OF UNIT TYPES AND MAY NOT DEPICT ACTUAL UNITS. ALL DEPICTIONS OF APPLIANCES, PLUMBING FIXTURES, EQUIPMENT, COUNTERS, SOFFITS, FLOOR COVERINGS AND OTHER MATTERS OF DETAIL ARE CONCEPTUAL ONLY AND ARE NOT NECESSARILY INCLUDED IN EACH UNIT.



TEA		ESPRESSO COFFEE	
\$10.00	Caffe Latte	\$10.00	
\$10.00	Vanilla Latte	\$10.00	
\$10.00	Caffe Latte	\$10.00	
\$10.00	Vanilla Latte	\$10.00	
\$10.00	Caffe Latte	\$10.00	
\$10.00	Vanilla Latte	\$10.00	

Convenient Café & Mini Mart

Enjoy fresh brews and quick bites at our cozy café or shop daily essentials at the mini mart. Located on the ground floor, it offers ultimate convenience for a seamless and comfortable lifestyle.